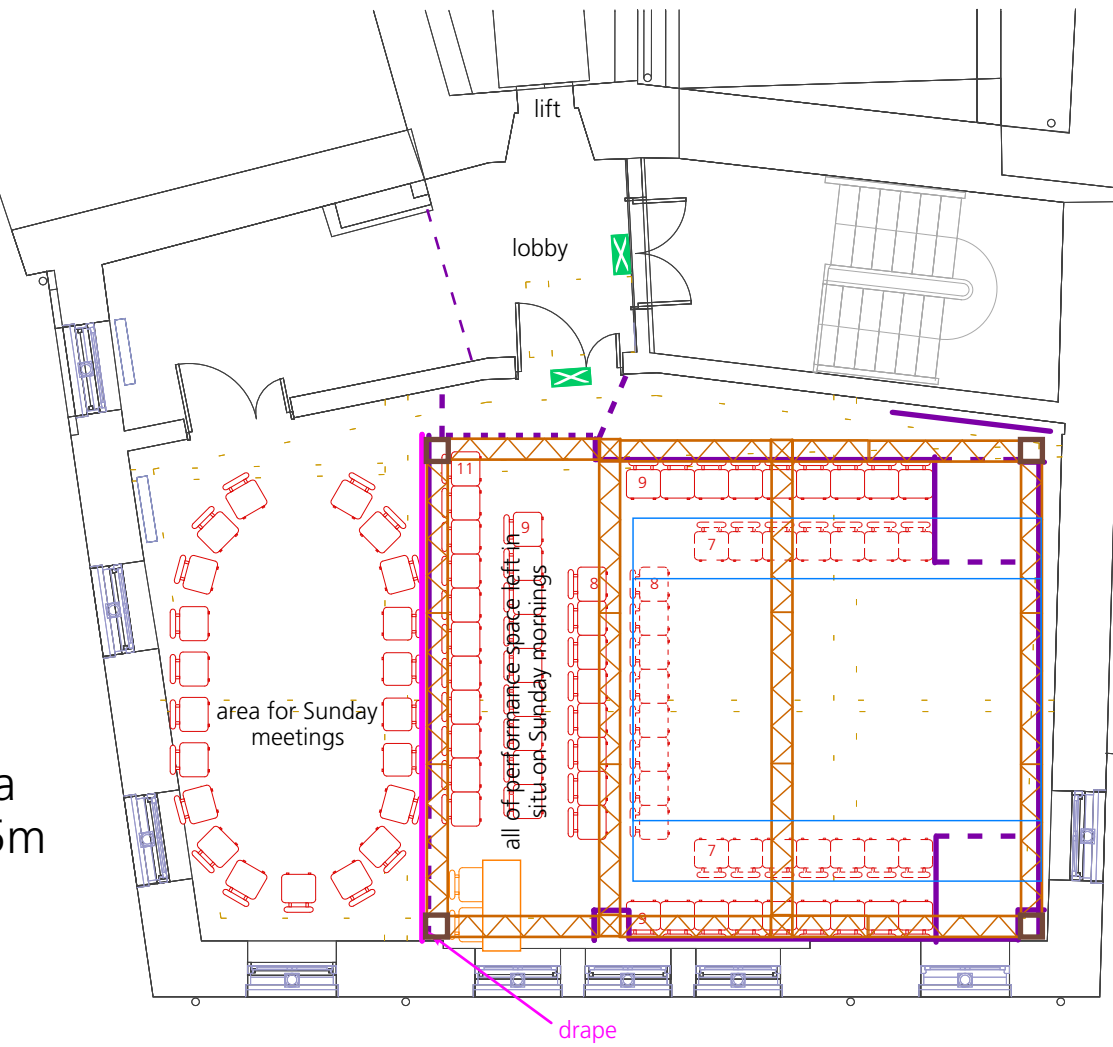
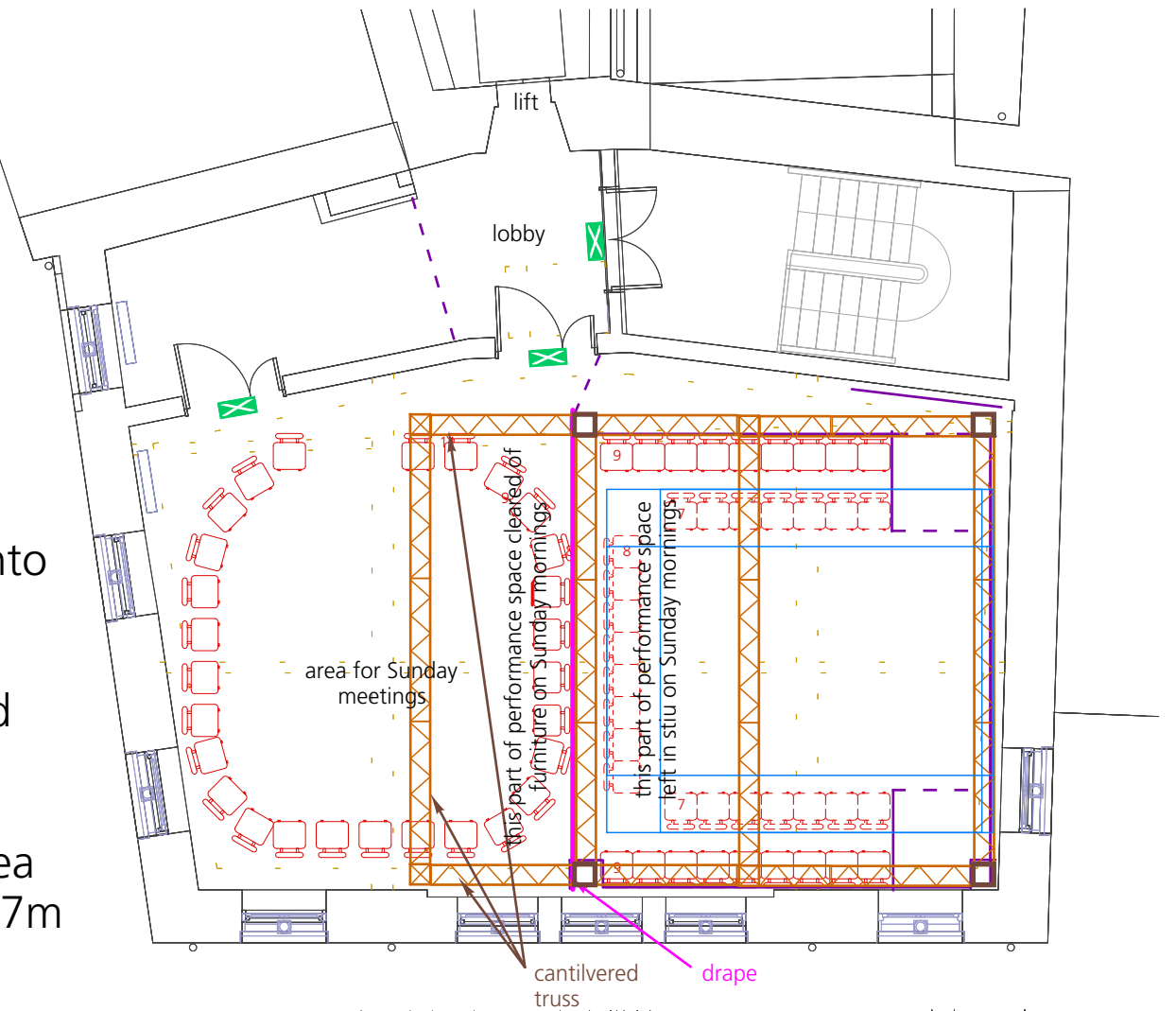


Meeting Room possible venue layouts

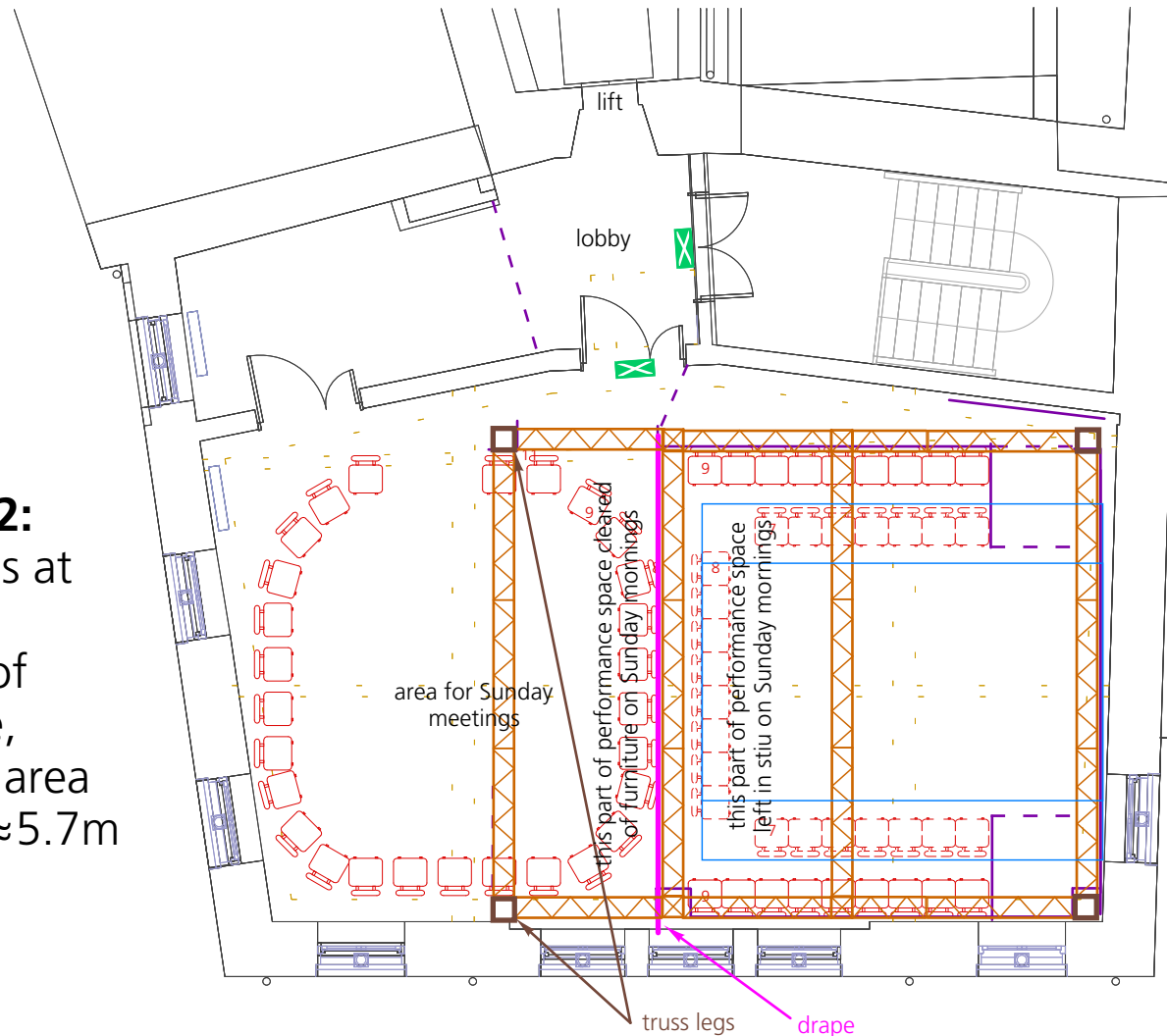
Option 1:
Truss legs at outside corners of structure, meeting area 6.5m x ≈3.5m



Option 3:
Two truss legs inset into structure with cantilevered truss overhang, meeting area 6.5m x ≈5.7m



Option 2:
Truss legs at outside corners of structure, meeting area 6.5m x ≈5.7m



Option 4:
Use of the performance area for the meeting area (available space approx 8m x 6m)

